

|                       |                        |                 |
|-----------------------|------------------------|-----------------|
| PROJECT: _____        | UNIT TAG: _____        | QUANTITY: _____ |
| REPRESENTATIVE: _____ | TYPE OF SERVICE: _____ | DATE: _____     |
| ENGINEER: _____       | SUBMITTED BY: _____    | DATE: _____     |
| CONTRACTOR: _____     | APPROVED BY: _____     | DATE: _____     |
|                       | ORDER NO.: _____       | DATE: _____     |

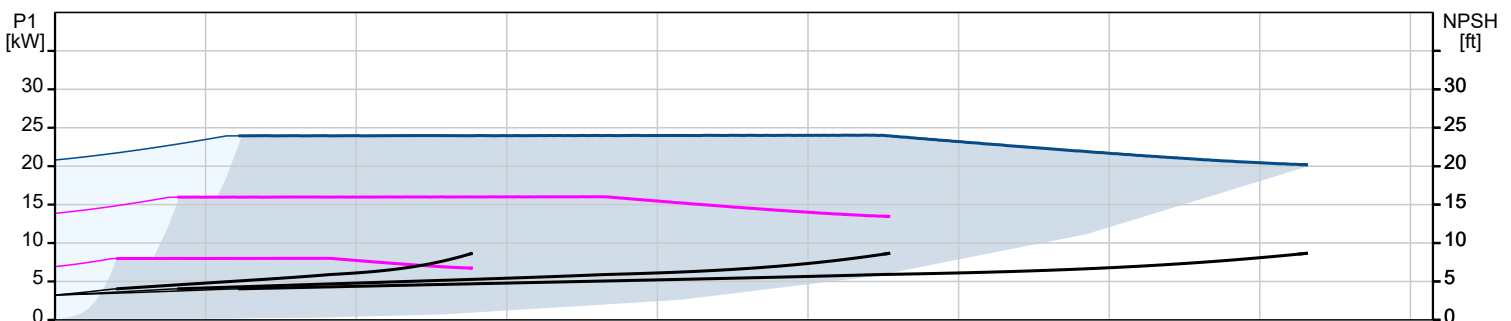
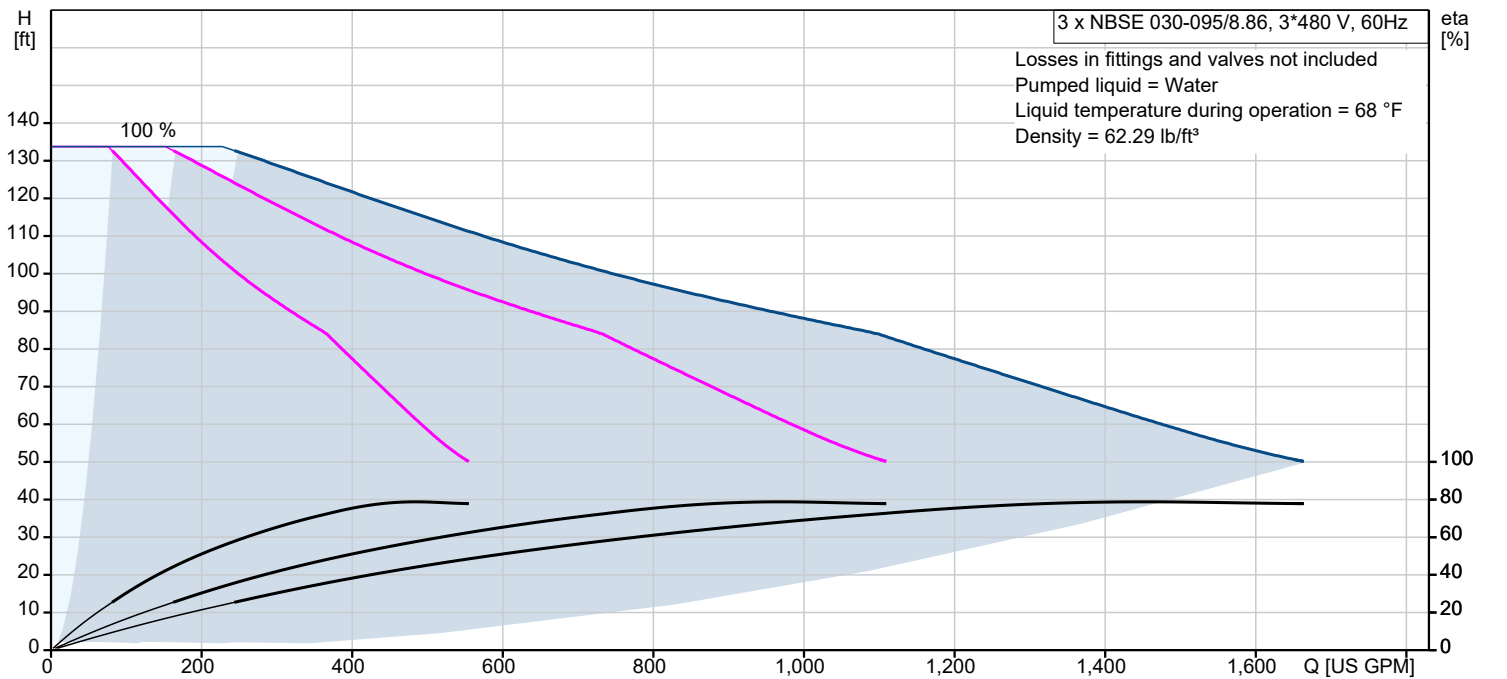


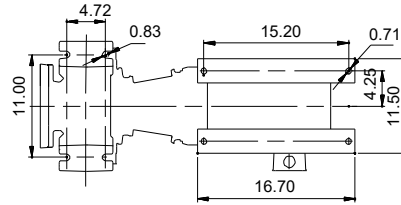
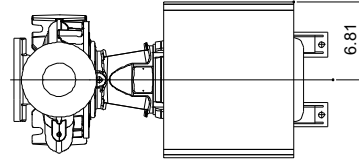
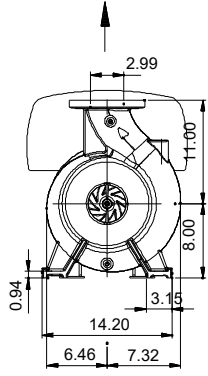
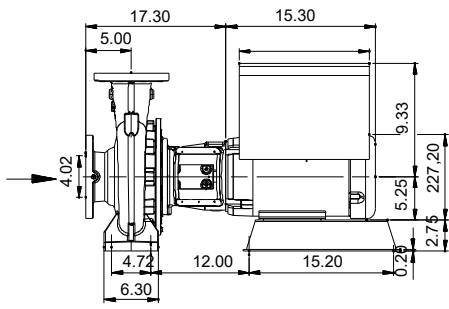
## NBSE 030-095/8.86 AASG6S2ESBQQEMCA

Split-coupled End-suction pumps with NEMA MLE motors and ANSI flange fittings.

Note! Product picture may differ from actual product

| Conditions of Service |       | Pump Data                    |               | Motor Data        |           |
|-----------------------|-------|------------------------------|---------------|-------------------|-----------|
| Efficiency:           | %     | Liquid temperature range:    | -13 .. 248 °F | Rated voltage:    | 440-480 V |
| Liquid:               | Water | Maximum ambient temperature: | 122 °F        | Mains frequency:  | 60 Hz     |
| Temperature:          | 68 °F | Shaft seal:                  | BQQE          | Enclosure class:  | TEFC      |
| NPSH required:        | ft    | Product number:              | On request    | Enclosure class:  | IP55      |
| Specific Gravity:     | 1.000 |                              |               | Insulation class: | F         |
|                       |       |                              |               | Motor protection: | ELEC      |
|                       |       |                              |               | Motor type:       | 132H      |
|                       |       |                              |               | Eta 1/1:          | 93.6 %    |

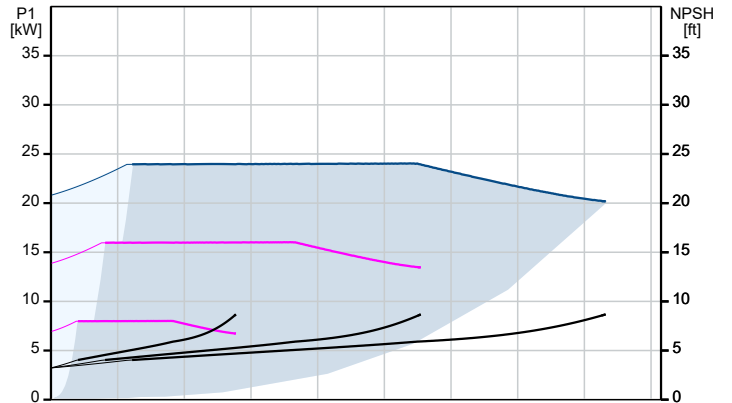
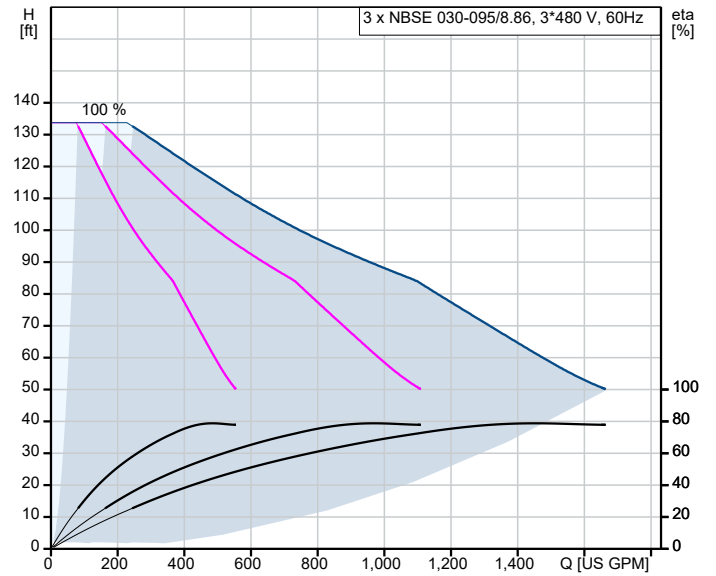




**Materials:**

- Pump housing: Cast iron
- Pump housing: ASTM A48-35
- Impeller: Stainless steel
- Impeller: AISI 304
- Impeller: EN 1.4308
- Material code: S2
- Code for rubber: E

| Description                              | Value                                 |
|--|---------------------------------------|
| <b>General information:</b>              |                                       |
| Product name:                            | NBSE 030-095/8.86<br>AASG6S2ESBQQEMCA |
| Product No:                              | On request                            |
| EAN number:                              | On request                            |
| <b>Technical:</b>                        |                                       |
| Pump speed on which pump data are based: | 2200 rpm                              |
| Rated flow:                              | 492 US GPM                            |
| Rated head:                              | 60.32 ft                              |
| Actual impeller diameter:                | 8.86 in                               |
| Code for shaft seal:                     | BQQE                                  |
| Curve tolerance:                         | 2B HI 14.6:2016                       |
| Pump version:                            | AS                                    |
| <b>Materials:</b>                        |                                       |
| Pump housing:                            | Cast iron                             |
| Pump housing:                            | EN-GJL-250                            |
| Pump housing:                            | ASTM A48-35                           |
| Impeller:                                | Stainless steel                       |
| Impeller:                                | EN 1.4308                             |
| Impeller:                                | AISI 304                              |
| Internal pump house coating:             | No coating                            |
| Material code:                           | S2                                    |
| Code for rubber:                         | E                                     |
| Shaft:                                   | Stainless steel                       |
| Shaft:                                   | EN 1.4201/1.4034                      |
| Shaft:                                   | AISI 420                              |
| <b>Installation:</b>                     |                                       |
| Maximum ambient temperature:             | 122 °F                                |
| Maximum operating pressure:              | 174.05 psi                            |
| Type of connection:                      | ANSI                                  |
| Size of inlet connection:                | 4 inch                                |
| Size of outlet connection:               | 3 inch                                |
| Pressure rating for connection:          | Class 125                             |
| Mounting options design code:            | B                                     |
| Support block (Yes/No):                  | Y                                     |
| Connect code:                            | G                                     |
| <b>Liquid:</b>                           |                                       |
| Pumped liquid:                           | Water                                 |
| Liquid temperature range:                | -13 .. 248 °F                         |
| Selected liquid temperature:             | 68 °F                                 |
| Density:                                 | 62.29 lb/ft <sup>3</sup>              |
| <b>Electrical data:</b>                  |                                       |
| Motor standard:                          | NEMA                                  |
| Motor type:                              | 132H                                  |
| IE efficiency class:                     | IE5                                   |
| Rated power - P2:                        | 10 HP                                 |
| Mains frequency:                         | 60 Hz                                 |
| Rated voltage:                           | 3 x 440-480 V                         |
| Rated current:                           | 12.2-11.3 A                           |
| Cos phi - power factor:                  | 0.91-0.90                             |
| Rated speed:                             | 180-2200 rpm                          |
| Motor efficiency at full load:           | 93.6 %                                |
| Number of poles:                         | 4                                     |
| Enclosure class (IEC 34-5):              | IP55                                  |
| Insulation class (IEC 85):               | F                                     |
| Built-in motor protection:               | ELEC                                  |
| Motor No:                                | 99198235                              |
| Mounting designation (IEC 34-7, Code I): | NEMA type C / foot                    |
| Bearing insulation type N-end:           | STEEL BEARING                         |
| <b>Controls:</b>                         |                                       |
| Control panel:                           | HMI300 - Advanced                     |
| Function Module:                         | FM300 - Advanced                      |





Company name:

Created by:

Phone:

Date:

05/10/2023

| Description               | Value                |
|---------------------------|----------------------|
| <b>Others:</b>            |                      |
| DOE Pump Energy Index CL: | 0.00                 |
| DOE Pump Energy Index VL: | 0.41                 |
| Net weight:               | 336 lb               |
| Gross weight:             | 337 lb               |
| Shipping volume:          | 8.12 ft <sup>3</sup> |