

PROJECT: _____	UNIT TAG: _____	QUANTITY: _____
REPRESENTATIVE: _____	TYPE OF SERVICE: _____	DATE: _____
ENGINEER: _____	SUBMITTED BY: _____	DATE: _____
CONTRACTOR: _____	APPROVED BY: _____	DATE: _____
	ORDER NO.: _____	DATE: _____

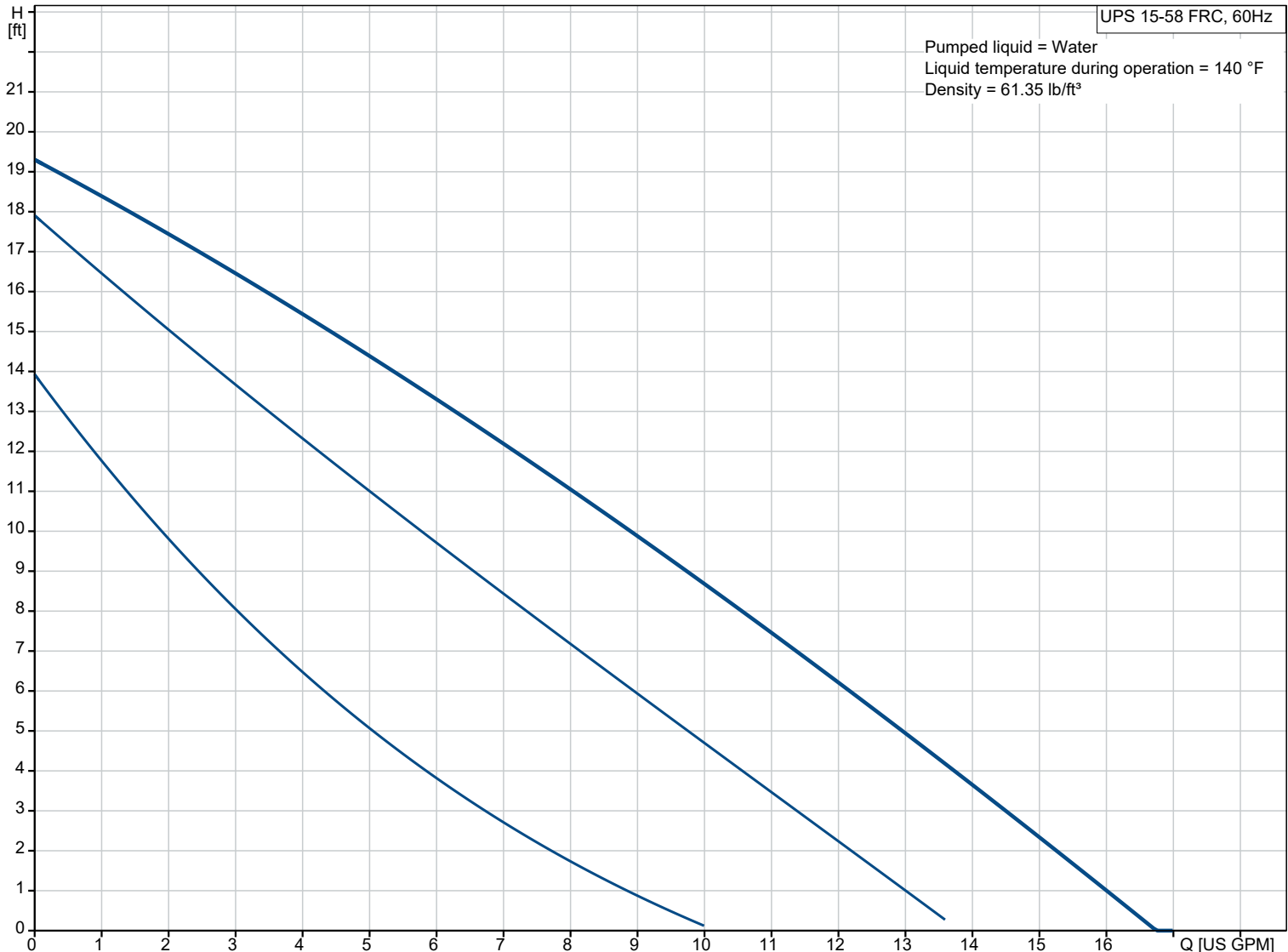


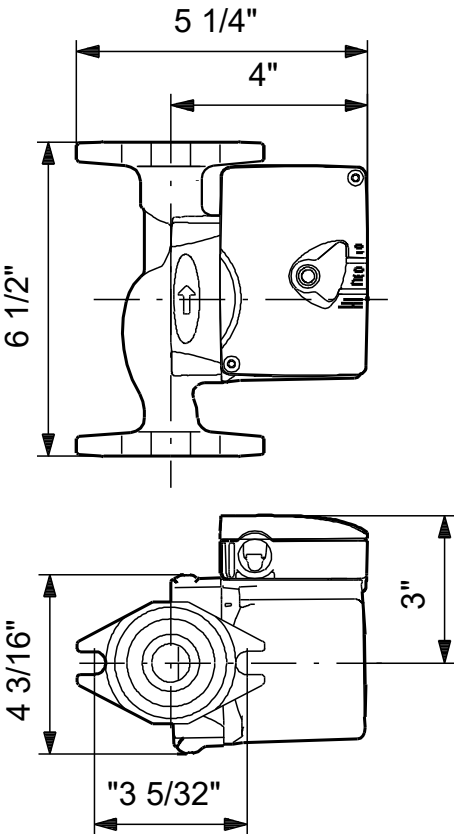
UPS 15-58 FRC

UPS is a three-speed circulator pump designed for heating and air-conditioning systems and is also used for central and district heating systems. The pump provides reliable and maintenance-free operation.

Note! Product picture may differ from actual product

Conditions of Service		Pump Data		Motor Data	
Efficiency:	%	Liquid temperature range:	35.6 .. 230 °F	Max. power input:	87 W
Liquid:	Water	Maximum ambient temperature:	104 °F	Mains frequency:	60 Hz
Temperature:	140 °F	Type of connection:	C.I. Flange	Thermal protection:	Impedance protected
NPSH required:	ft	Pipe connection:	2-BOLT FLANGE R		
Specific Gravity:	0.985	Product number:	59896343		





Materials:
Pump housing: Cast iron
Pump housing: ASTM A48-25B
Impeller: Composite

Qty.	Description
1	<p>UPS 15-58 FRC Product No.: 59896343 The pump is of the canned rotor type, i.e. pump and motor form an integral unit without shaft seal and with only two gaskets for sealing. The bearings are lubricated by the pumped liquid. The pump has 3-step speed selector. The pump is characterized by:</p> <ul style="list-style-type: none"> * Ceramic shaft and radial bearings. * Carbon axial bearing. * Stainless steel rotor can and bearing plate. * Corrosion-resistant impeller, Composite. * Cast iron pump housing. <p>The motor is a 1-phase motor. No additional motor protection is required.</p> <p>Liquid: Pumped liquid: Water Liquid temperature range: 35.6 .. 230 °F Selected liquid temperature: 140 °F Density: 61.35 lb/ft³</p> <p>Technical: Rated flow: 8.5 US GPM Max flow: 17.2 US GPM Rated head: 10.47 ft Approvals: UL, CSA</p> <p>Materials: Pump housing: Cast iron EN 1561 EN-GJL-150 ASTM A48-25B Impeller: Composite PES+30% GF</p> <p>Installation: Max. ambient: 104 °F Amb. max at 80 dgr C liquid: 176 °F Maximum operating pressure: 145.04 psi Type of connection: OVAL C.I. Flange Pipe connection: 2-BOLT FLANGE R Pressure rating for connection: PN 10 Port-to-port length: 6.54 in</p> <p>Electrical data: Power input in speed 1: 0.0805 HP Power input in speed 2: 80 W Max. power input: 87 W Mains frequency: 60 Hz Rated voltage: 1 x 115 V Current in speed 1: 0.55 A Current in speed 2: 0.66 A Current in speed 3: 0.75 A Capacitor size - run: 10 µF/180 V Number of poles: 2 Insulation class (IEC 85): F Built-in motor protection: CONTACT</p> <p>Others: Terminal box position: 9H Net weight: 6.28 lb Gross weight: 6.8 lb</p>