

PROJECT: _____	UNIT TAG: _____	QUANTITY: _____
REPRESENTATIVE: _____	TYPE OF SERVICE: _____	DATE: _____
ENGINEER: _____	SUBMITTED BY: _____	DATE: _____
CONTRACTOR: _____	APPROVED BY: _____	DATE: _____
	ORDER NO.: _____	DATE: _____

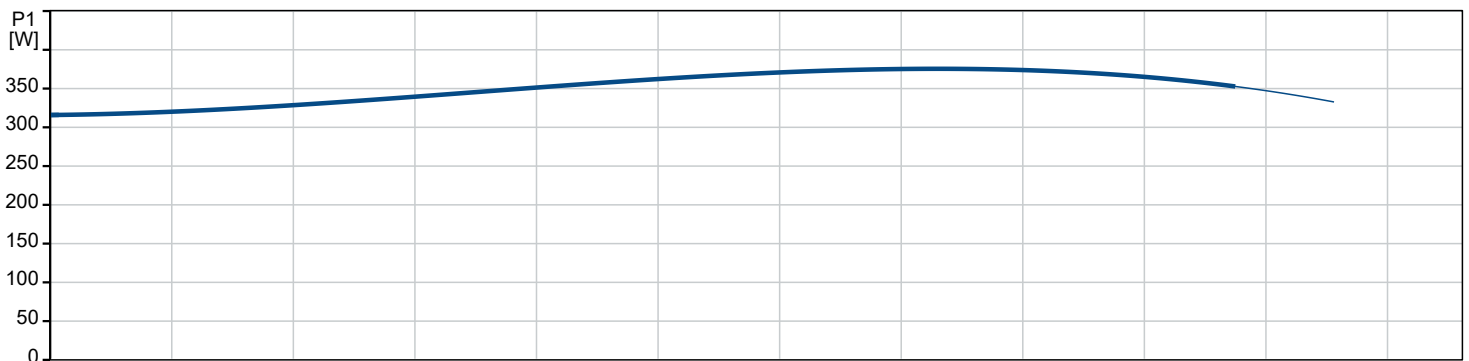
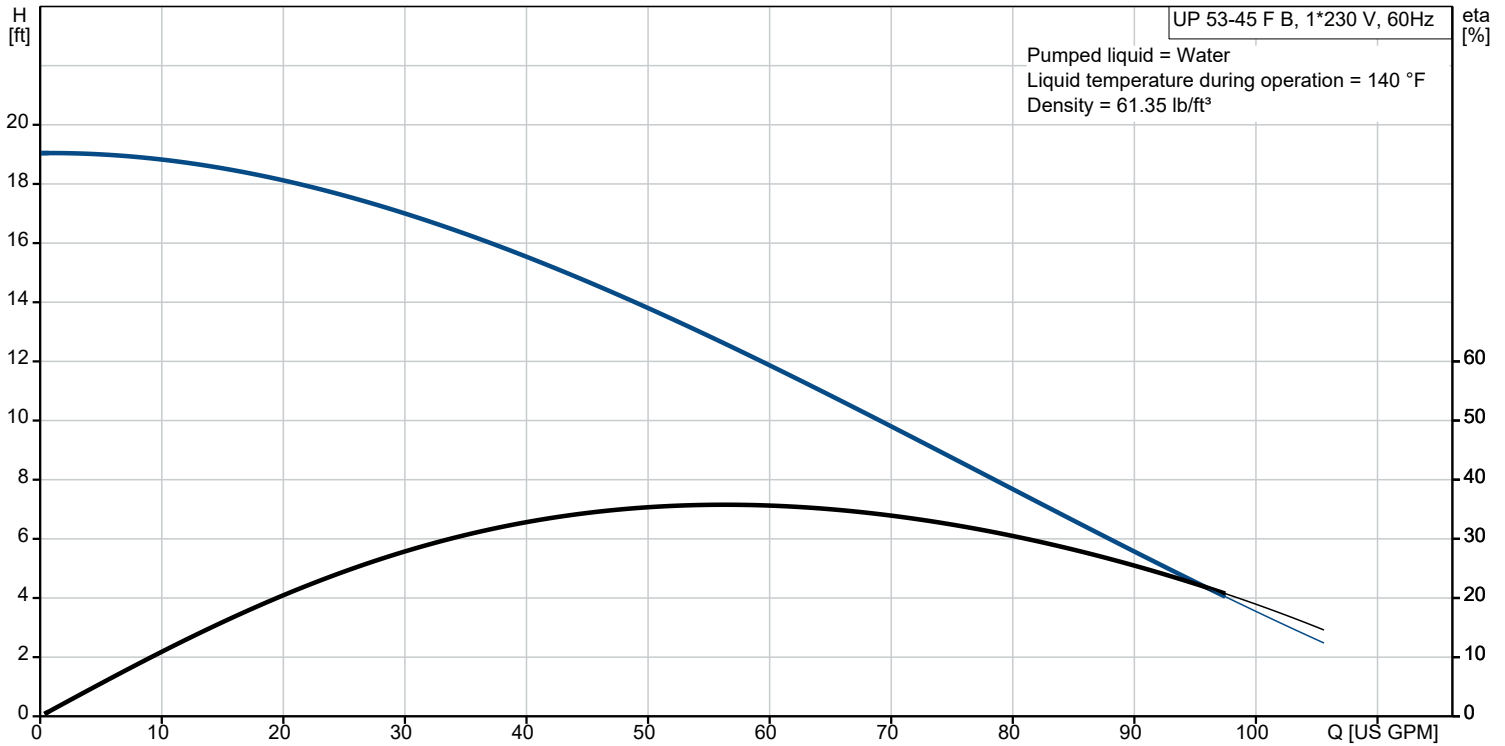


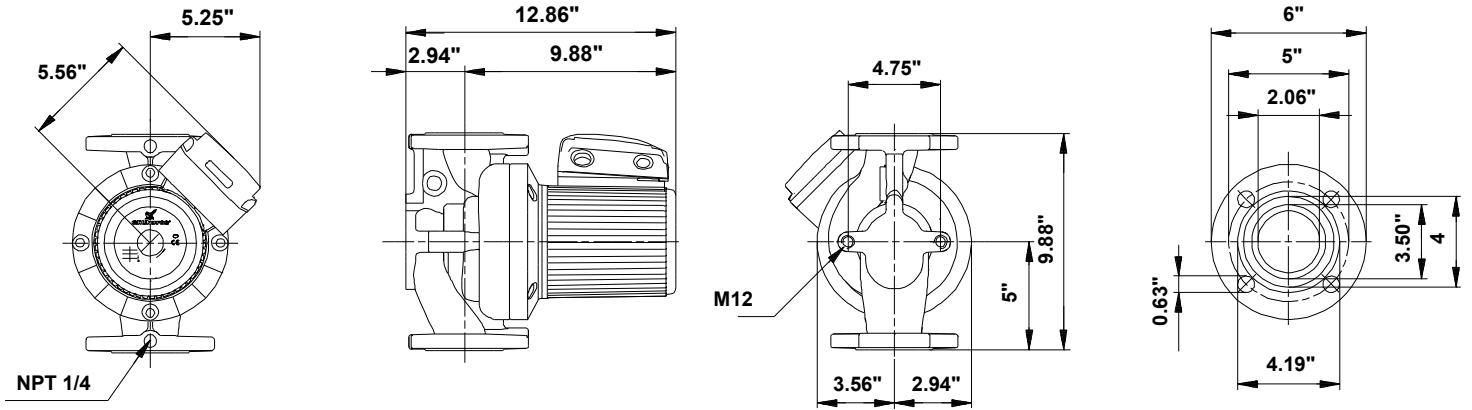
## UP 53-45 F B

UP B is a single-speed circulator pump with a corrosion-resistant bronze pump housing designed for hot-water recirculation. The pump provides reliable and maintenance-free operation.

Note! Product picture may differ from actual product

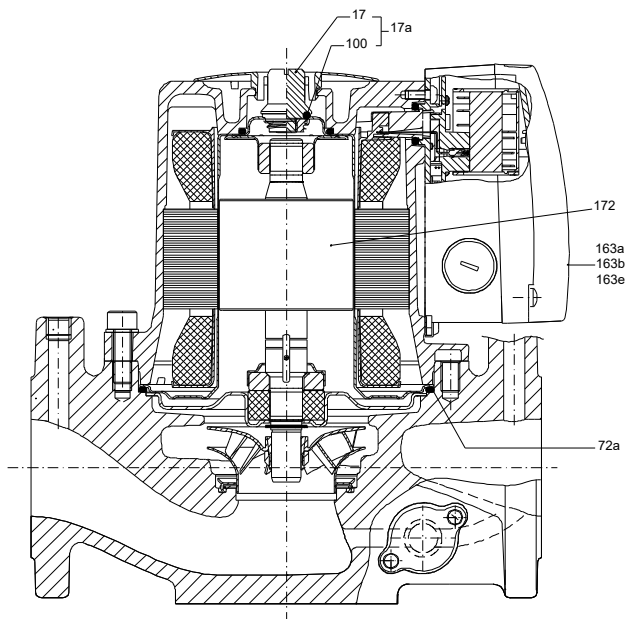
Conditions of Service		Pump Data		Motor Data	
Efficiency:	%	Liquid temperature range:	14 .. 230 °F	Max. power input:	380 W
Liquid:	Water	Maximum ambient temperature:	104 °F	Rated voltage:	115-230 V
Temperature:	140 °F	Pipe connection:	GF 53	Mains frequency:	60 Hz
NPSH required:	ft	Product number:	96633578	Enclosure class:	X4D
Specific Gravity:	0.985			Thermal protection:	internal





**Materials:**

- Pump housing: Bronze
- Impeller: Stainless steel
- Impeller: AISI 304
- Impeller: EN 1.4301



Qty.	Description
1	<p><b>UP 53-45 F B</b>            Product No.: <a href="#">96633578</a>            The pump is of the canned rotor type, i.e. pump and motor form an integral unit without shaft seal and with only two gaskets for sealing. The bearings are lubricated by the pumped liquid.</p> <p>In order to avoid problems in connection with disposal, great importance has been attached to using as few different materials as possible. The pump is characterized by:</p> <ul style="list-style-type: none"> <li>* 1 speed motor.</li> <li>* Ceramic radial bearings.</li> <li>* Carbon axial bearing.</li> <li>* Stainless steel rotor can, bearing plate and rotor cladding.</li> <li>* Aluminium alloy stator housing.</li> <li>* Bronze pump housing.</li> <li>* Stator with built-in thermal switch.</li> </ul> <p>The motor is a 1-phase motor.</p> <p>The pump is supplied with a standard module in the terminal box. The standard module is to be connected to the mains supply via external contactor.</p> <p>Controls:</p> <p>Relay: with relay</p> <p>Liquid:</p> <p>Pumped liquid: Water</p> <p>Liquid temperature range: 14 .. 230 °F</p> <p>Selected liquid temperature: 140 °F</p> <p>Density: 61.35 lb/ft<sup>3</sup></p> <p>Technical:</p> <p>Approvals: CCSAUS,IAPMO</p> <p>Materials:</p> <p>Pump housing: Bronze CuSn10</p> <p>Impeller: Stainless steel EN 1.4301 AISI 304</p> <p>Installation:</p> <p>Range of ambient temperature: 32 .. 104 °F</p> <p>Maximum operating pressure: 145.04 psi</p> <p>Type of connection: DIN</p> <p>Pipe connection: GF 53</p> <p>Pressure rating for connection: PN 10</p> <p>Port-to-port length: 9 7/8 in</p> <p>Electrical data:</p> <p>Max. power input: 380 W</p> <p>Mains frequency: 60 Hz</p> <p>Rated voltage: 1 x 115-230 V</p> <p>Current in speed 3: 3.5/1.9 A</p> <p>Cos phi: 0.95</p> <p>Capacitor size - run: 30 µF/240 V</p> <p>Enclosure class (IEC 34-5): X4D</p> <p>Insulation class (IEC 85): F</p> <p>Built-in motor protection: CONTACT</p>



Company name: Hurley Engineering

Created by:

Phone:

Date: 23/02/2023

Qty.	Description
1	Others: Terminal box position: 1.30H Net weight: 49.2 lb Gross weight: 57.1 lb Shipping volume: 2.12 ft <sup>3</sup>