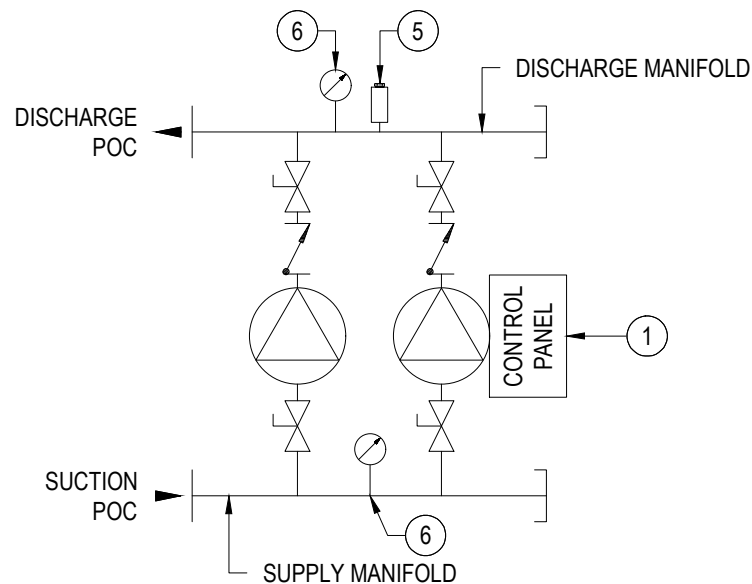


## GENERAL NOTES

- ① - SYSTEM CONTROL PANEL WITH SINGLE POINT POWER CONNECTION, CONTROL PANEL IS DIRECTLY MOUNTED ON BASE FRAME.
- ② - ANSI FLANGE CLASS 150 OR NPT CONNECTION TO 316SS MANIFOLD. PROVIDE A MINIMUM OF ONE NOMINAL FLANGE DIAMETER LENGTH FROM FLANGE TO EXPANSION JOINT ON BOTH SUCTION AND DISCHARGE. SEE PLANS FOR COORDINATED CONFIGURATION AND SIZE.
- ③ - ISOLATION VALVE, TWO PER PUMP.
- ④ - SPRING-LOADED NON-SLAME TYPE CHECK VALVE, ONE FOR EACH PUMP.
- ⑤ - FACTORY INSTALLED PRESSURE TRANSDUCER ON DISCHARGE MANIFOLD.
- ⑥ - TWO FACTORY INCLUDED 2.5"Ø PRESSURE GAUGE, ONE ON SUCTION AND ONE ON DISCHARGE.
- ⑦ - 304 SS BASE FRAME WITH RUBBER VIBRATION DAMPENERS FITTED BETWEEN EACH PUMP AND THE BASE FRAME.



1

# GRUNDFOS HYDRO MULTI-E DUPLEX BOOSTER

SCALE: NTS



DRAWING TITLE:  
GRUNDFOS HYDRO MULTI-E DUPLEX BOOSTER  
DETAIL AND SCHEMATIC

DRAWING NUMBER:  
007.A

DRAWN BY  
BM

LAST REVISED  
01/11/2022

DRAWING SCALE  
NTS

THE DOCUMENT AND ALL INFORMATION SHOWN IS PROPERTY OF HURLEY ENGINEERING, INC. THIS DOCUMENT IS NOT TO BE REDISTRIBUTED OR COPIED OR USED FOR THE MANUFACTURING OF EQUIPMENT WITHOUT PRIOR WRITTEN CONSENT FROM HURLEY ENGINEERING, INC.

QR CODE